

# VIAMI

## mSWS Calibration

Protect your investment in a VIAMI mSWS by ensuring it is always operating at its best. VIAMI provides multiple Calibration Service options designed to align with diverse customer needs. In addition to standard Return to Factory calibration, options also exist for VIAMI to go directly onsite to customer locations thereby maximizing the uptime of these valuable assets. Customers can then further select from various Service Levels associated with the reporting detail they require.

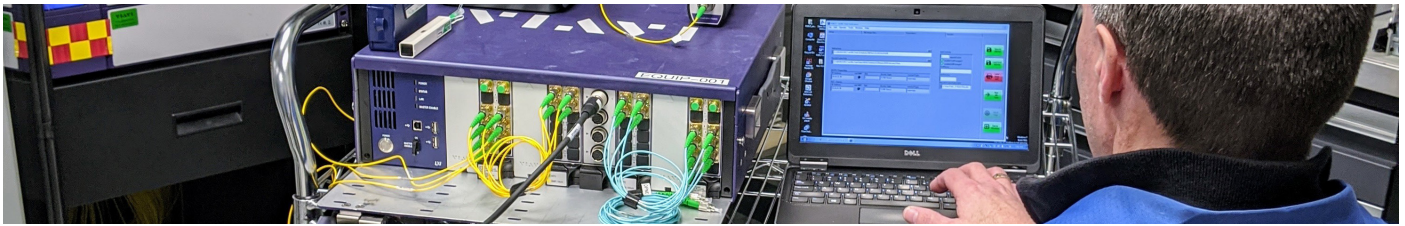
### Standards

Instruments are calibrated based on general requirements for the competence of calibration and testing laboratories (ISO/IEC 17025:2005) using applicable VIAMI Solutions procedures, IEC 61280-4-1, IEC 61280-4-2 and IEC 62614 guidance. Results are traceable to French National Standards and NIST which are consistent with the recommendations of the General Conference on Weights and Measures (CGPM), or to standards derived from natural constants, or to standards relying on ratio measurements with self-calibrating technique for their calibration. Calibration procedures are VIAMI Solutions developed to ensure best practices and standards throughout the VIAMI Service Network. Service Reports include document control numbers for processes and procedures.

### Overview

SWS systems are often distributed and complex pieces of integrated test infrastructure and are part of an active production environment. For these reasons, returning systems or portions of systems to the factory for calibration is not always an attractive or even a viable alternative. VIAMI now offers Onsite, in addition to Return to Factory options for most SWS components to allow customers to select the offering that works best for their needs.

- Conduct a functional test of the system to verify that vital functions perform as expected
- Inspect and clean the optics and optical connections
- Verify measurement accuracy to traceable standards
- Document findings with a report of observations, measurements and actions
- Update calibration dates and/or provide calibration label noting date of calibration and due date for next calibration (after consultation with customer)
- Perform instrument and module maintenance to extend product lifetime
- Perform software updates



## Services

### Onsite Verification

For customers that are unable to return their product to VIAVI for service, VIAVI offers an onsite validation service. With this option, a VIAVI technician comes directly to the customer site and will perform functional test and (if necessary) calibration including a cert and calibration sticker.

### Onsite Calibration

This offers an upgrade to the level of service received for customers opting for onsite services. With the Onsite Calibration, the customer receives all the same services as the Onsite Verification with the addition of a detailed report that identifies as received/final condition of the product as well as the detailed test results for each product tested.

### Return to Factory

Return to Factory service is a comprehensive Service option that includes, functional testing, recalibration (if necessary), implementation of necessary engineering changes, software upgrade, calibration sticker/cert and calibration report. This option is available for all currently supported SWS products, mainframes and modules.

### Onsite Maintenance

In some cases, minor repairs can be done onsite at the customer location during an onsite calibration or verification engagement. This type of repair could include replacement of damaged adapters or ejector handles, and software updates. For cases where products need to be returned to the Factory for repair, VIAVI personnel can help to ensure that returned products have accurate information to ensure efficient processing.

mSWS	Onsite	Factory
<b>mSWS-SOM</b>		
<b>Laser Source Cassette</b>		
Calibrate and Verify the 4SPC		●
Firmware Load		●
Cassette Initialization (SN/Rev/etc)		●
Wavelength Verification	●	●
Wavelength Calibration		●
PDL Verification		●
<b>mSWS-A2TX</b>		
Firmware Load		●
Cassette Initialization (SN/Rev/etc)		●
Run Self test	●	●
Verify 1310nm output power		●
Verify IL	●	●
<b>mSWS-A2RX</b>		
Firmware Load		●
Cassette Initialization (SN/Rev/etc)		●
Run Self test	●	●
Power Reference Linearity Calibration	●	●
Power Reference Linearity Verification	●	●
Verify IL		●
<b>mSWS-A2DM</b>		
Firmware Load		●
Cassette Initialization (SN/Rev/etc)		●
Run Self Test	●	●
Power Reference Linearity Calibration	●	●
Power Reference Linearity Verification	●	●
<b>General</b>		
Provide Calibration Certificate	●	●
Provide Calibration Report	○	●
Apply Calibration Sticker	●	●
<b>Maintenance/Repair</b>		
Inspect Unit for Damage	●	●
Inspect and Clean Connectors	●	●
Confirm Unit Operational	●	●
FW/SW Updates		●
Repair of Non-functional Products		●
Minor Repairs	○	●
Cleaning	○	●

● Always included

○ Optional item

## SWS Service Table

The following products are currently supported. For hardware not on the list contact or to obtain additional information, please contact your local VIAVI Services representative.

Applicable Products
mSWS-SOM
mSWS-A2LS
mSWS-A2TX
mSWS-A2RX
mSWS-A2DM



Contact Us **+1 844 GO VIAVI**  
(+1 844 468 4284)

To reach the VIAVI office nearest you,  
visit [viavisolutions.com/contact](https://www.viavisolutions.com/contact)

© 2020 VIAVI Solutions Inc.  
Product specifications and descriptions in this  
document are subject to change without notice.  
mswscalibration-ds-ser-nse-ae  
30191063 901 0620